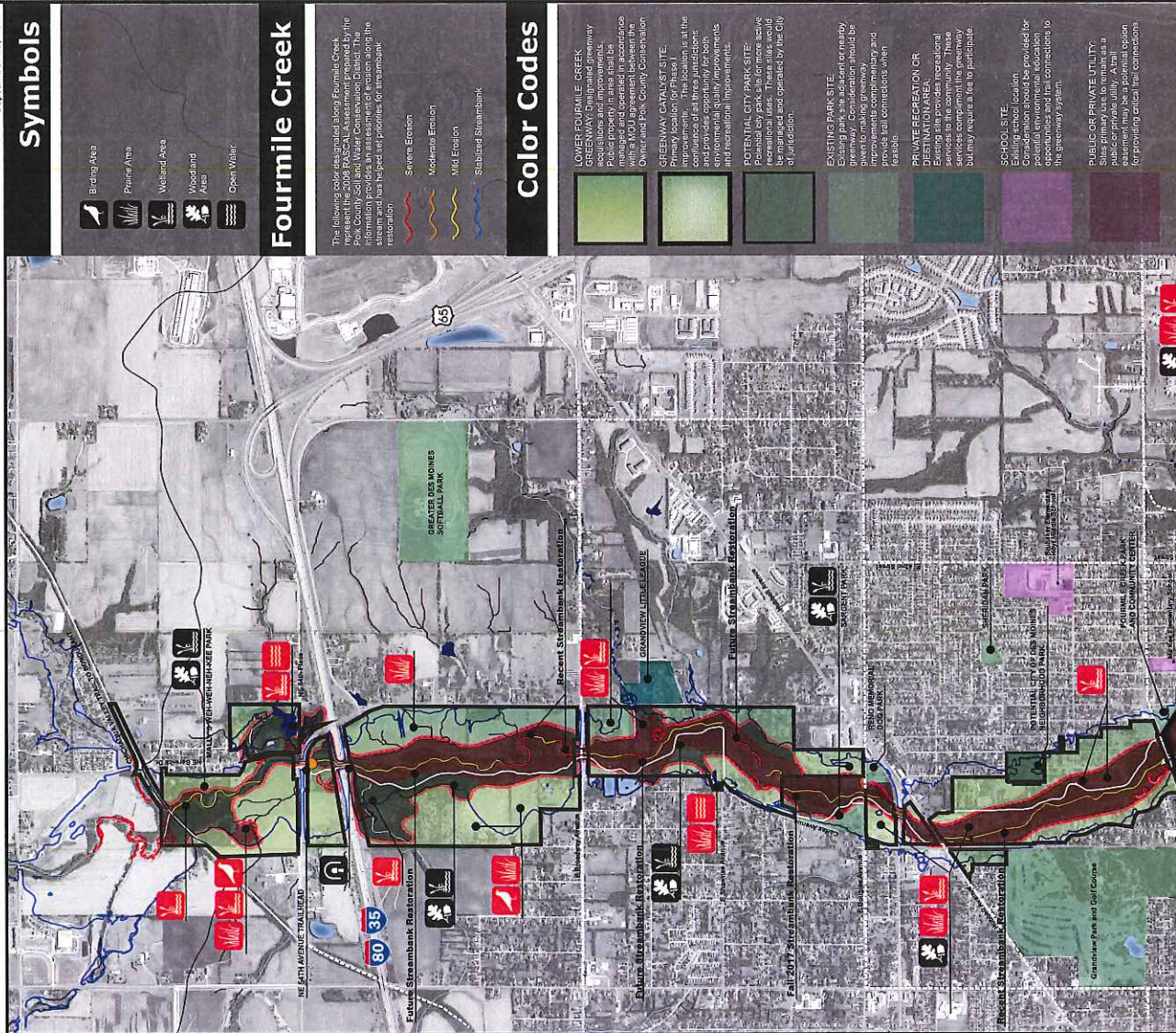


# Lower Fourmile Creek Greenway

## MASTER PLAN EXHIBIT A: Natural Resources

September 19, 2017



### Symbols

- Bridging Area
- Prairie Area
- Wetland Area
- Woodland Area
- Open Water

### Fourmile Creek

The following color designated along Fourmile Creek represent the 2008 RASCAL Assessment prepared by the Polk County Soil and Water Conservation District. The stream and has helped set priorities for streambank restoration.

- Severe Erosion
- Moderate Erosion
- Mild Erosion
- Stabilized Streambank

### Color Codes

- LOWER FOURMILE CREEK GREENWAY:** Designated greenway public property in areas that be managed and operated in accordance with the Streambank Stabilization Ordinance and Polk County Conservation District and Park County Conservation District.
- GREENWAY CATALYST SITE:** Primary location for Phase I improvements. The location is at the intersection of the greenway and existing park, providing for recreational and environmental quality improvements and incremental improvements.
- POTENTIAL CITY PARK SITE:** Potential city park site for more active management and operated by the City of Jurisdiction.
- EXISTING PARK SITE:** Existing park site adjacent or nearby greenway. Consideration should be given to incremental improvements and provides trail connections when feasible.
- PRIVATE RECREATION OR PUBLIC USE:** Existing park site provides recreational services to the community. These sites are managed by the city, but they require us to participate in the greenway system.
- SCHOOL SITE:** Existing school location. Consideration should be provided for potential greenway trail connections to the greenway system.
- PUBLIC OR PRIVATE UTILITY:** Sites primary use to remain as a public or private utility. Consideration for providing critical trail connections.

### Legend

- Existing Natural Habitat and Potential Restoration Area
- Potential Natural Habitat Restoration
- Potential Segmentation or Deletion Blotch
- Potential Oxbow Restoration
- Existing Tree Cover
- Potential Grassed Waterway
- Existing Floodway
- Existing Proposed Wetlands and Wetland Buffer Zones
- 500-Year Floodplain Boundary

**Project Partners:**



SNYDER ASSOCIATES