

Lower Fourmile Creek Greenway

MASTER PLAN EXHIBIT B - Recreation

September 19, 2017

Symbols

GENERAL FEATURES:	TOOL FEATURES:	RECREATION FEATURES:	SPECIAL FEATURES:
Parking	Multi-User Trail	Ball Field(s)	Dog Park
Restroom	Soft Surface Nature Trail	Natural Playscape	Bollard
Open Play Area	Trail Tunnel	Water Play Feature	Community Center
Enclosed Picnic Shelter	Trail Bridge Crossing	Golf Course	Urban Agriculture
Open Picnic Shelter	Paved Winding Trail	Disc Golf	Camping
Central Area Trail Light	Boardwalk(s)	Fishing	Festivals
Interpretive Signage	Cross-Country Skiing	Blanch	
Gathering Space	Single Track Trail	Boat Access	

Color Codes

LOWERFOURMILE CREEK GREENWAY
 The Lower Fourmile Creek Greenway public-private partnership area shall be developed in accordance with the MOU agreement between the City of Polk and Polk County Convention Center and Polk County Convention Center.

GREENWAY CATALYST SITE
 A primary location for developing the Greenway. The site shall be developed in accordance with the MOU agreement between the City of Polk and Polk County Convention Center and Polk County Convention Center.

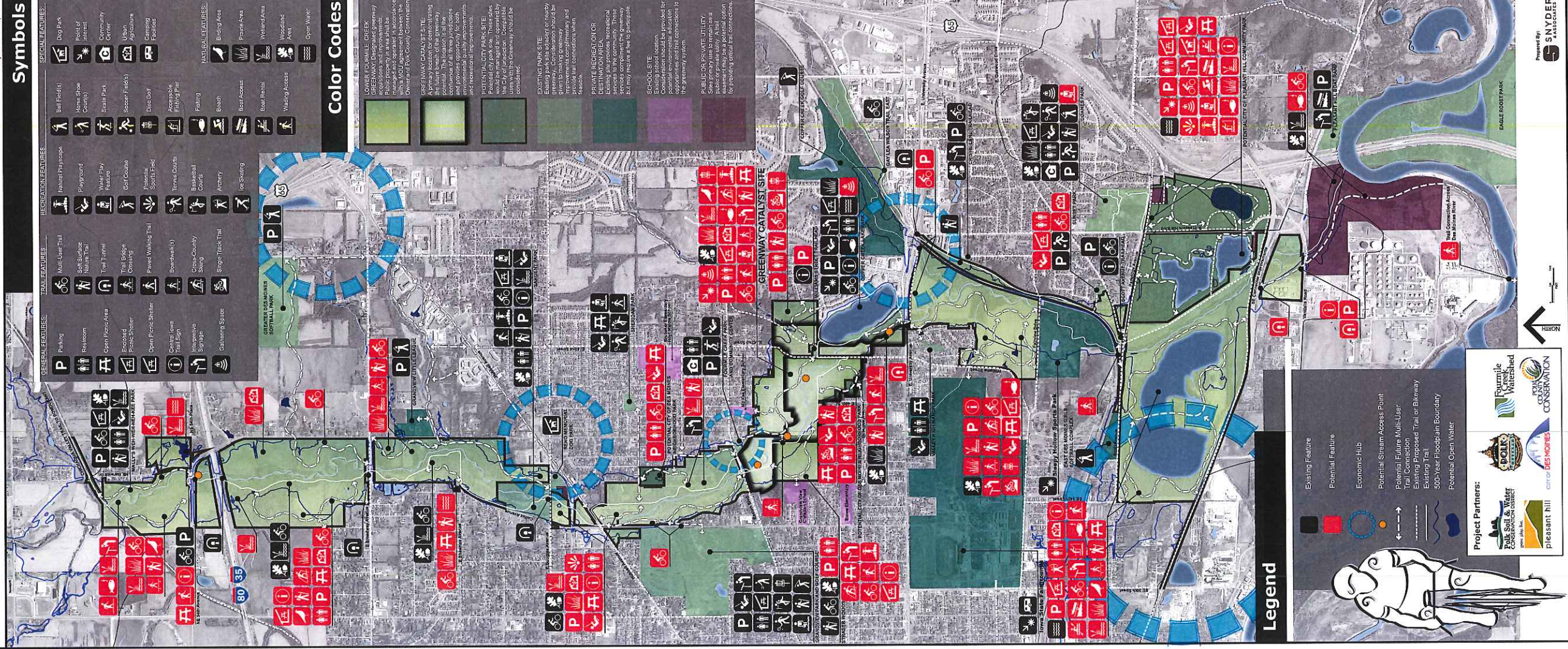
POTENTIAL CITY PARK SITE
 Potential City park site. These sites shall be developed in accordance with the MOU agreement between the City of Polk and Polk County Convention Center and Polk County Convention Center.

EXISTING PARK SITE
 Existing park site. These sites shall be developed in accordance with the MOU agreement between the City of Polk and Polk County Convention Center and Polk County Convention Center.

PRIVATE RECREATION OR DESTINATION AREA
 Private recreation or destination area. These sites shall be developed in accordance with the MOU agreement between the City of Polk and Polk County Convention Center and Polk County Convention Center.

SCHOOL SITE
 School site. These sites shall be developed in accordance with the MOU agreement between the City of Polk and Polk County Convention Center and Polk County Convention Center.

PUBLIC OR PRIVATE UTILITY
 Public or private utility. These sites shall be developed in accordance with the MOU agreement between the City of Polk and Polk County Convention Center and Polk County Convention Center.



Legend

- Existing Feature
- Potential Feature
- Economic Hub
- Potential Stream Access Point
- Potential Future Multi-User Trail Connection
- Existing Trail or Bluelway
- 500-Year Floodplain Boundary
- Potential Open Water

Project Partners:

- Polk County Convention Center
- Polk County Watershed Conservation
- Polk County Parks and Recreation
- Polk County Water Conservation District
- Polk County Economic Development

Prepared By
 SNYDER ASSOCIATES